

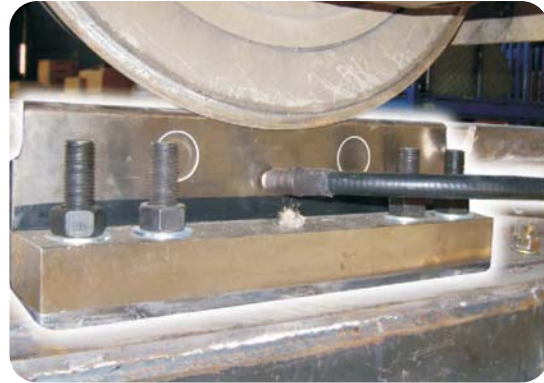
# TRAKMATE

## Static Train Balancing & Weighing System (Ideal for railway workshops)

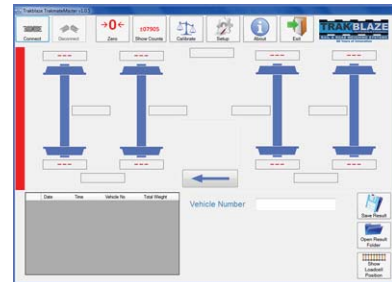
Trakmate is a new and unique concept design for the weighing and balancing of any type of rail vehicle. It is the real solution for weighing and balancing in all manufacturing, rail maintenance workshops or other suited applications.



Trakmate 1 in-line loadcells



Trakmate 2 loadcells under rails



Touchscreen PC controller



Bogie balancing press fitted with Trakmate loadcells



Trakmate test press is used for on-site calibration - no test train required

- Simple to install
- User friendly
- Suits all rail types
- Heavy duty - with built in overload protection
- Temperature compensated
- Any wheel/weight combination can be obtained on the touch screen PC
- Cost effective